

Allen County - 2011

Strengths: Allen County is about average on many indicators.

Challenges: Allen County ranked higher in Health Outcomes than for Health Factors, indicating that overall healthiness will decline in the coming years if no positive changes occur. Health factors of biggest concern include obesity rates, teen births, sexually transmitted disease, smoking, education, & poverty.

Significant Activities: Allen County has numerous partnerships and coalitions working to address many of the challenges identified by the rankings.

- **Allen County Healthy People 2020** – This group is reviewing and strategizing about the needs of the community identified through the 2009 Allen County Community Needs Assessment, released in September of 2009.
- **Creating Healthy Communities** – A grant-funded initiative to decrease the impact of chronic disease on Allen County residents. Many partners are working to make the healthy choice the easy choice where we live, learn, work and play.
- **Sustainable Communities Initiative** – A broad group of community leaders working to establish benchmarks for our community and measure our progress towards meeting those benchmarks through evidence based practices.

Health Outcomes: 46th
Health Factors: 68th

Major Strength

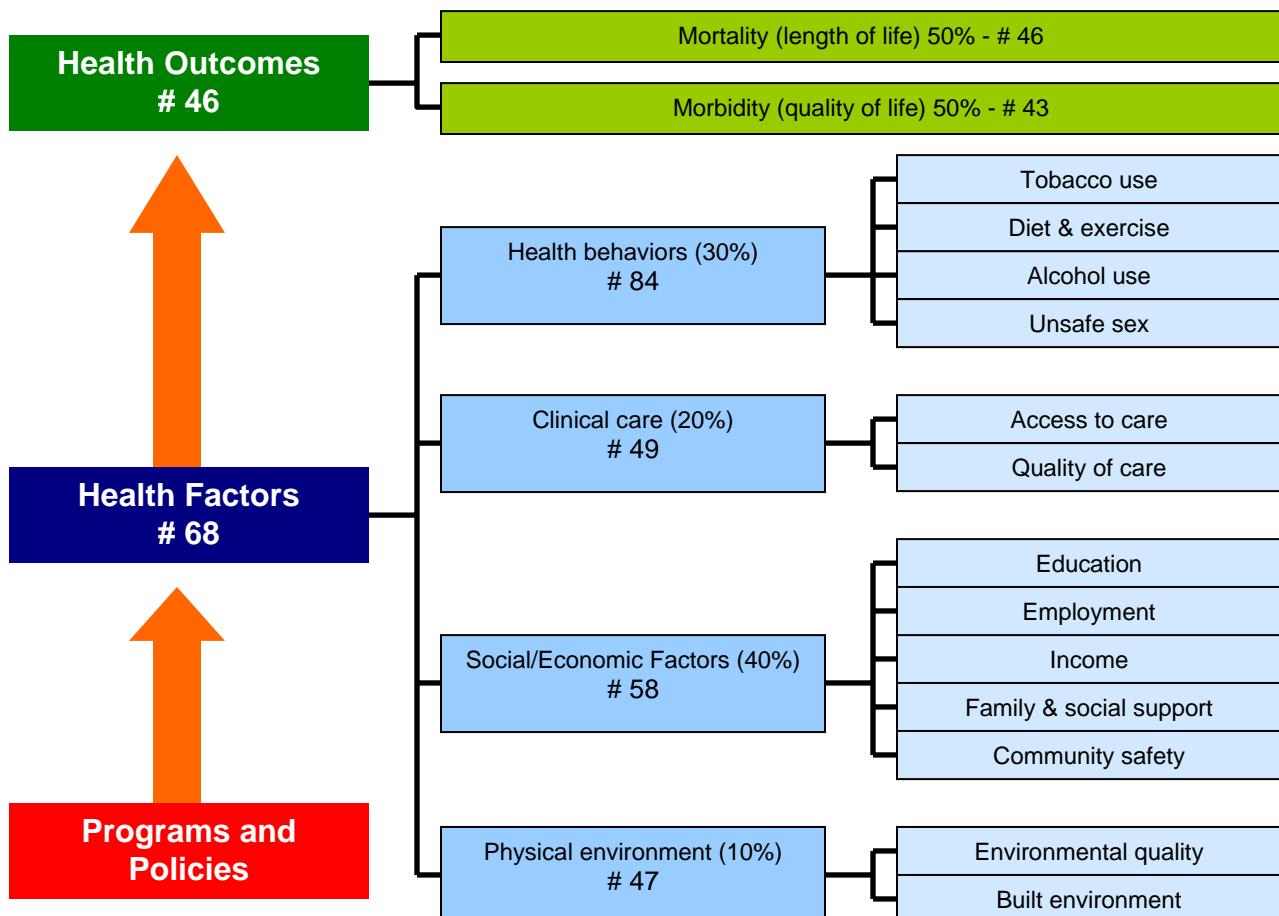
- ❖ Morbidity - # 43
- Quality of life

Moderate Strength

- ❖ Mortality - # 46
- Low years of premature life lost
- ❖ Physical environment - # 47
- Access to recreational facilities
- ❖ Clinical care - # 49

Challenges

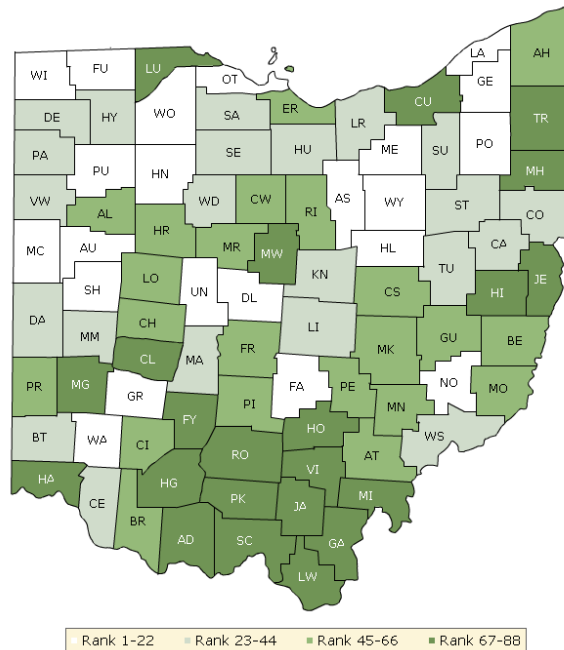
- ❖ Health behaviors - # 84
- High rates of obesity, smoking, excessive drinking, high risk sexual habits
- ❖ Social & economic factors - # 58
- High rates of unemployment, poverty, and single parent families



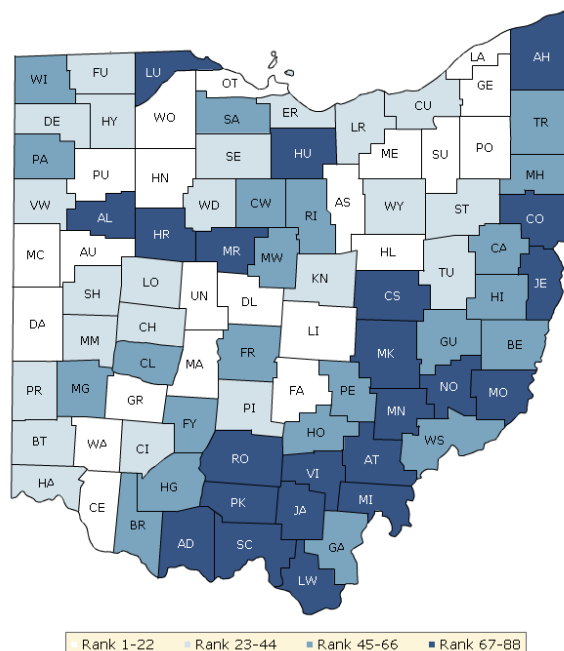
The maps on this page display Ohio's counties divided into groups by health rank. The lighter colors indicate better performance in the respective summary rankings. The green map shows the distribution of summary health outcomes. The blue displays the distribution of the summary rank for health factors.

Maps help locate the healthiest and least healthy counties in the state. The health factors map appears similar to the health outcomes map, showing how health factors and health outcomes are closely related.

HEALTH OUTCOMES



HEALTH FACTORS



County Health Rankings - Snapshot 2011: Allen County

Measure	Allen County	Error Margin	National Benchmark*	OH Value	Rank (of 88)
HEALTH OUTCOMES					46
Mortality					46
Premature death - Years of potential life lost before age 75 per 100,000 population (age-adjusted)	7,530	6,942-8,117	5,564	7,578	
Morbidity					43
Poor or fair health - Percent of adults reporting fair or poor health (age-adjusted)	10%	7-15%	10%	15%	
Poor physical health days - Average number of physically unhealthy days reported in past 30 days (age-adjusted)	2.9	1.8-4.0	2.6	3.6	
Poor mental health days - Average number of mentally unhealthy days reported in past 39 days (age-adjusted)	3.6	1.4-5.9	2.3	3.7	
Low birthweight - Percent of live births with low birthweight (<2500 grams)	9.0%	8.4-9.5%	6.0%	8.5%	
HEALTH FACTORS					68
Health Behaviors					84
Adult Smoking - Percent of adults that report smoking >= 100 cigarettes and currently smoking	20%	14-28%	15%	23%	
Adult obesity - Percent of adults that report BMI >= 30	33%	28-37%	25%	30%	
Excessive drinking - Binge plus heavy drinking ¹	14%	7-24%	8%	17%	
Motor vehicle crash death rate - Motor vehicle crash deaths per 100,000 population	14	11-17	12	13	
Sexually transmitted infections - Chlamydia rate per 100,000 population	452	- - -	83	411	
Teen birth rate - Teen birth rate per 1,000 female population, ages 15-19	56	53-59	22	41	
Clinical Care					49
Uninsured adults - Percent of population under age 65 without health insurance	15%	12-18%	13%	14%	
Primary care providers - Ratio of population to primary care providers	971:1	- - -	631:1	859:1	
Preventable hospital stays - Hospitalization rate for ambulatory-care sensitive conditions per 1,000 Medicare enrollees	87	84-90	52	82	
Diabetic screening - Percent of diabetic Medicare enrollees that receive HbA1c screening	83%	76-89%	89%	83%	
Mammography screening - Percent of female Medicare enrollees that receive mammography screening	61%	54-68%	74%	65%	
Social & Economic Factors					58
High school graduation - Percent of ninth grade cohort that graduates in 4 years	80%	- - -	92%	79%	
Some college - Percent of adults aged 25-44 years with some post-secondary education	52%	15-17%	68%	58%	
Unemployment - Percent of population age 16+ unemployed but seeking work	11.2%	10.9-11.4%	5.3%	10.2%	
Children in poverty - Percent of children under age 18 in poverty	21%	17-25%	11%	19%	
Inadequate social support - Percent of adults without social/emotional support	20%	12-31%	14%	20%	
Single-parent households - Percent of all households that are single-parent households	36%	- - -	20%	33%	
Homicide rate - Deaths due to homicide per 100,000 population (age-adjusted)	4	3-6	1	5	
Physical Environment					47
Air pollution-particulate matter days - Annual number of unhealthy air quality days due to fine particulate matter	3	- - -	0	2	
Air pollution-ozone days - Annual number of unhealthy air quality days due to ozone	3	- - -	0	6	
Access to healthy foods - Healthy food outlets include grocery stores and produce stands/farmers' markets	70%	- - -	92%	64%	
Access to recreational facilities - Rate of recreational facilities per 100,000 population	11	- - -	17	10	

* 90th percentile, i.e. only 10% are better

Note: Blank values reflect unreliable or missing data

¹ Binge drinking plus heavy drinking, where heavy drinking is defined as % of adults that drank >2 drinks per day on average (men) or >1 drink per day on average (women)

Source URL: <http://chr2011.forumone.com/ohio/allen>

2011 County Rankings: Measures, Data Sources, and Years of Data

Measure	Data Source	Years of Data
Health Outcomes		
Mortality	Premature death (Years of Potential Life Lost)	National Center for Health Statistics 2005-2007
Morbidity	Low birthweight	National Center for Health Statistics 2001-2007
	Poor or Fair Health	Behavioral Risk Factor Surveillance System 2003-2009
	Poor physical health days	Behavioral Risk Factor Surveillance System 2003-2009
	Poor mental health days	Behavioral Risk Factor Surveillance System 2003-2009
Health Factors		
Health Behaviors		
Tobacco Use	Adult smoking	Behavioral Risk Factor Surveillance System 2003-2009
Diet and Exercise	Adult obesity	National Center for Chronic Disease Prevention and Health Promotion 2008
Alcohol Use	Excessive drinking	Behavioral Risk Factor Surveillance System 2003-2009
	Motor vehicle crash death rate	National Center of Health Statistics 2001-2007
Unsafe Sex	Teen birth rate	National Center of Health Statistics 2001-2007
	Sexually transmitted infections (Chlamydia rate)	National Center for Hepatitis, HIV, STD, and TB Prevention 2008
Clinical Care		
Access to Care	Uninsured adults	Small Area Health Insurance Estimates 2007
	Primary care providers	Health Resources & Services Administration 2008
Quality of Care	Preventable hospital stays	Dartmouth Institute: Dartmouth Atlas Project, Medicare Claims Data 2006-2007
	Diabetic screening	Dartmouth Institute: Dartmouth Atlas Project, Medicare Claims Data 2006-2007
	Mammography screening	Dartmouth Institute: Dartmouth Atlas Project, Medicare Claims Data 2006-2007
Social & Economic Factors		
Education	High school graduation	National Center for Education Statistics 2006-2007
	Some college	American Community Survey 2005-2009
Employment	Unemployment	US Bureau of Labor Statistics 2009
Income	Children in poverty	Small Area Income and Poverty Estimates 2008
Family and Social Support	Inadequate social support	Behavioral Risk Factor Surveillance System 2005-2009
	Single-parent households	American Community Survey 2005-2009
Community Safety	Violent crime or Homicide rate	Uniform Crime Reporting, Federal Bureau of Investigation, or National Center for Health Statistics 2006-2008 or 2001-2007
Physical Environment		
Environmental Quality	Air pollution - particulate matter days	CDC Environmental Protection Agency Collaboration 2006
	Air pollution - ozone days	CDC Environmental Protection Agency Collaboration 2006
Built Environment	Access to healthy foods	Zip Code Business Patterns 2008
	Access to recreational facilities	County Business Patterns 2008